

August 2027 - Bali Fundraising Journey

Welcome to the Mate's Gift Fundraising Journey

Thank you for being part of the Mate's Gift Fundraising Journey. This experience has been created to bring people together in support of animal welfare and community care in Bali.

This is not a commercial holiday or traditional group package. It is a shared-cost, charity-led journey designed to support Mate's Gift programs and the communities we work alongside. Throughout the journey, we travel together, live simply and spend time in places where Mate's Gift has built long-standing relationships based on trust, respect and collaboration.

To help maintain the personal, respectful and community-focused nature of the experience, this journey is intentionally kept small, with a maximum of 8 participants.

Should interest exceed available places, Mate's Gift may choose to offer a second Bali journey immediately following the first, potentially commencing from 12 August 2027. This will be confirmed closer to the date depending on interest levels, accommodation availability and program scheduling.

Our days will include hands-on support for animal welfare initiatives, time outside the main tourist areas, visits to community projects and opportunities to learn more about daily life, conservation and culture in this region.

Some days will be active and early, others slower and more reflective. There will be moments of joy, moments of challenge and plenty of shared meals, conversations and connection along the way.

The journey is guided and coordinated by Christie on behalf of Mate's Gift. Activities and visits are undertaken in collaboration with local organisations, caretakers and community members who run these programs day to day. Our role is to support, learn and contribute respectfully within systems that already exist.

This journey exists because of fundraising. Your involvement directly supports sterilisation clinics, parasite control programs, wildlife care, rescue shelter support and other community-led initiatives that cannot continue without collective effort.

The work you will see, and become part of, continues long after the journey ends.

We ask everyone to approach this experience with openness, flexibility, humility and respect. You do not need special skills or previous experience. What matters most is a willingness to listen, learn, help where appropriate and be mindful guests in the places we are welcomed into.

Thank you for choosing to be part of this journey. The impact of your presence reaches far beyond these dates, these communities and this itinerary.

August 2027 - Bali Fundraising Journey

Day 1 – Sunday 1st August 2027 - Welcome to Bali!

Travel Time – Airport to Sanur accommodation approx. 60 mins

Arrive in Bali and transfer to accommodation by private car before settling into your rooms. Unpack, get comfortable, have a swim, relax on your balcony and prepare yourself for a big week ahead. Depending on arrival times, guests may wish to explore Sanur's beachfront promenade, nearby cafés, local shops or simply enjoy a quiet dinner and early night after travelling. Sanur is known for its relaxed atmosphere, walkable streets and calmer pace compared to other parts of Bali, making it the perfect place to settle in before the journey begins. In the evening, we will gather casually as a group for introductions, a relaxed dinner and a brief overview of the week ahead.

Arrival Transfers

Two scheduled airport transfer windows are included within the journey costs. Please advise us of your flight details so we can coordinate group arrivals where possible. If you arrive outside the included transfer windows, airport transfer can still be organised by us at your own cost (approximately IDR 250,000–350,000 per vehicle depending on time and luggage requirements).

SIM Cards & Data

If you would like a local SIM card during your stay, we strongly recommend purchasing this at the airport after clearing customs. Telekomsel is generally the most reliable provider throughout Bali. A data package in the range of approximately IDR 250,000–350,000 is usually more than enough for the duration of the 9–10 day journey.

Local Supplies & Supermarket

A supermarket is located approximately 5 minutes walk from our villa accommodation, making Day 1 the perfect opportunity to stock up on any essentials you may need for the week ahead.

Recommended items may include:

- Soffell mosquito repellent
- Local snacks and drinks
- Fruit and breakfast extras
- Electrolyte drinks
- Sunscreen and toiletries

Enjoy your first day in Bali!

August 2027 - Bali Fundraising Journey

Day 2 – Monday 2 August 2027

8am Breakfast together at a local restaurant or warung.

Depart 9am with water, repellent, Mate's Gift tee, small snack in case our day runs late, your phone, wet ones / hand sanitiser and change of clothes.

Travel Time – Sanur to Saba approx. 45 mins (ACT Dog Rescue) Gojek

9am

- Tour of ACT facilities and pet shop
- Visit quiet recovery and rehabilitation areas
- Meet the dogs and learn about ACT programs
- We will deliver our suitcases today (so may take several cars depending on numbers)
- Time to get acquainted with the animals, people and daily operations
- Begin prep work for dog treat packaging and organisational tasks

Travel time - 45 mins - Return to accommodation Gojek

Dinner together and downtime.

August 2027 - Bali Fundraising Journey

Day 3 – Tuesday 3 August 2027

Travel Time – Sanur to Saba approx. 45 mins - gojek

Depart 9am with water, repellent, Mate's Gift tee, small snack in case our day runs late, your phone, wet ones / hand sanitiser and change of clothes.

Return to ACT Dog Rescue for a hands-on grooming and maintenance day.

Tasks may include:

- Grooming dogs before or after veterinary procedures
- Washing and brushing dogs
- Nail clipping where appropriate
- Confidence building and handling support
- Assisting with enrichment preparation
- Painting, gardening and general maintenance projects
- Organising capsules, medication bottles and outreach supplies
- Pricing and tagging stock and donated items
- Continuing preparation for upcoming clinics

Travel time - 45 mins - Return to accommodation Gojek

Dinner together and rest.

Day 4 – Wednesday 4 August 2027

Travel Time – Sanur to Saba approx. 45 mins - gojek

Depart 9am with water, repellent, Mate's Gift tee, small snack in case our day runs late, your phone, wet ones / hand sanitiser and change of clothes.

Sterilisation clinic day based at Saba.

Guests will have the opportunity to observe and assist with the daily running of the clinic while learning about the importance of sterilisation and preventative veterinary care in Bali.

Tasks may include:

- Assisting with sterilisation clinic organisation
- Clip dog nails whilst sedated
- Support pre and post-operative care
- Grooming before or after procedures where suitable
- Assist with recovery area setup and monitoring
- Organising medications and supplies
- Packaging parasite control and outreach items

Alternative jobs may include:

- Making up medication bottles and packs for outreach trips
- Organising capsules for medications
- Stock organisation and supply preparation

Travel time - 45 mins - Return to accommodation Gojek

Dinner together and downtime.

August 2027 - Bali Fundraising Journey

Day 5 – Thursday 5 August 2027

Travel Time – approx. 60 mins - gojek

Depart 9am with water, repellent, Mate's Gift tee, small snack in case our day runs late, your phone, wet ones / hand sanitiser and change of clothes.

Community beach clinic day (or alternative location)

Travel to a coastal community clinic location supporting local dogs and cats through sterilisation, parasite control and community outreach.

Tasks may include:

- Community sterilisation clinic support
- Vaccinations
- Parasite control
- Community outreach and education
- Clip dog nails whilst sedated
- Deliver treats and supplies to clinics
- Assist with stocktake and organisation where needed

Please bring a change of clothes in case we get particularly grubby during the day, as well as hand sanitiser and wet wipes.

Travel Time – approx. 60 mins - gojek

Dinner together in the evening.

**** Christie to purchase fruit donations for the animals for the sanctuary.

(banana, papaya, watermelon, dragon fruit and sweet corn)

Day 6 – Friday 6 August 2027

Travel Time – 90 mins each way - gojek

Depart 9am with water, repellent, Mate's Gift tee, small snack in case our day runs late, your phone, wet ones / hand sanitiser and change of clothes.

Wildlife sanctuary support day at Bali Wildlife Rescue Centre.

This day focuses on understanding wildlife rehabilitation and conservation work in Indonesia, including the realities of illegal wildlife trade and rescue efforts.

Tasks may include:

- Maintenance and cleaning
- Enclosure upkeep
- Food preparation
- General support tasks

[Bali Wildlife Rescue Center – Friends of Nature, People and Forests](#)

Wildlife Sanctuary Support Day – Context and Expectations

Today we will spend time supporting a local wildlife rescue facility that forms part of a wider network of wildlife rehabilitation centres across Indonesia.

This facility primarily receives animals that have been confiscated from illegal wildlife trade, smuggling cases, or inappropriate private ownership. Many of the animals arriving here are not native to Bali, which can make rehabilitation, permits, relocation, and eventual release complex and time-consuming.

The sanctuary operates as a temporary holding and rehabilitation space, acting as a stepping stone before animals are transferred to more specialised facilities or approved release sites elsewhere in Indonesia. While the long-term goal is always rehabilitation and release, some animals require extended care due to medical, behavioural, or legal constraints.

August 2027 - Bali Fundraising Journey

Guests should be aware that this is not a polished or modern facility, and it may feel confronting for those accustomed to Western wildlife centres. Resources are limited, infrastructure is basic, and the focus is firmly on welfare, triage, and movement through the system rather than presentation.

Despite these challenges, the work being done here is important and meaningful. The centre has a long history of collaboration with experienced veterinarians and conservation programs, including successful breeding and recovery efforts for endangered species. It also works closely with partner organisations to ensure animals are moved on as quickly and responsibly as possible.

Our role during this visit is to offer practical support where appropriate, assist with maintenance and cleaning tasks, and gain a deeper understanding of the realities of wildlife protection in Indonesia. This visit is intended to be educational and eye-opening, highlighting an often unseen side of conservation work, particularly the impact of illegal wildlife trade.

This experience may challenge expectations, but it reflects the real conditions under which many dedicated local teams work to protect animals every day.

Stop at fruit shop on the way to purchase fruit donations for the animals

- Maintenance and cleaning
- Enclosure upkeep
- General support tasks

*** OPTIONAL (and optional cost) As a group or individual, you can choose to head to Tanah Lot after the sanctuary in a gojek car or bike. There is an entrance fee to the lot as well as your own gojek fees.

Travel time - 90 mins return to Sanur

Dinner together in the evening.

August 2027 - Bali Fundraising Journey

Day 7 – Saturday 7 August 2027 – Day Off

Enjoy a well-deserved day off.

Gusts can choose to have breakfast together or head off on their own adventure (or even just have a well deserved sleep in!)

All meals are included today (if you do not eat as a group, your meal allowance will be reimbursed)

Optional ideas:

- Odd Cat Café Canggu
- Shopping
- Beach clubs
- Massage and spa time
- Relaxing around Sanur

Any optional activities, transport and entrance fees are at your own cost.

August 2027 - Bali Fundraising Journey

Day 8 – Sunday 8 August 2027 Adoption Day – Possible locations include Renon or Gianyar.
Travel Time – approx. 45 mins - gojek

Depart 10am with water, repellent, Mate's Gift tee, small snack in case our day runs late, your phone, wet ones / hand sanitiser and change of clothes.

Guests may assist with:

- Adoption day setup
- Meeting adopters and visitors
- Walking and handling dogs
- Basic grooming touch-ups
- Helping showcase adoptable dogs

Following Adoption Day, guests may also assist with transport support tasks including:

- Picking dogs up from clinics
 - Dropping dogs back to foster care or recovery areas
- Assisting with supply and donation transport
- Supporting the ACT team with end-of-day logistics

Evening – Sanur Beach Night Lights

Sanur becomes beautifully lit in the evenings, with decorative lighting, beach restaurants and reflections across the water creating a relaxed atmosphere along the beachfront boardwalk.

The ICON Bali beachfront complex also usually hosts a small fountain and light show around sunset.

Enjoy dinner, walks along the promenade and ocean views together.

August 2027 - Bali Fundraising Journey

Day 9 – Monday 9 August 2027

Travel Time – Sanur to Saba approx. 45 mins

Depart 9am with water, repellent, Mate's Gift tee, small snack in case our day runs late, your phone, wet ones / hand sanitiser and change of clothes.

Final working day at ACT Dog Rescue.

Tasks may include:

- Grooming
- Health checks
- Confidence building
- Supporting daily care needs
- Treat and enrichment preparation
- Painting, gardening and maintenance projects
- Final organisation and clean-up tasks
- Wrap up with the ACT team

Dinner together and final evening downtime.

Day 10

Tuesday 10 August 2027 (option 1 for 9 nights / option 2 for 10 nights)

Free day OR departure day.

Day 11 – Wednesday 11 August 2027

Guests are welcome to relax, swim, organise shopping, enjoy Sanur or use the accommodation as a base before departure flights.

Please advise us of your departure times so transport can be coordinated where possible.

Please note Christie will likely be staying longer, and guests flying later in the evening are welcome to use her room as a base to relax, swim and store luggage after check-out.

August 2027 - Bali Fundraising Journey

Accommodation

Option1

9 nights accommodation (3 levels of room - standard, superior, suite)

Check-in Sunday 1 Aug 2027 to check-out Tuesday 10th Aug 2027.

Option2

10 nights accommodation (3 levels of room - standard, superior, suite)

Check-in Sunday 1 Aug 2027 to check-out Wednesday 11 Aug 2027.

Costings Full Journey Fee (minus fundraising)

Standard Room - 9 NIGHTS	Superior Room - 9 NIGHTS	Suite - FULLY BOOKED - 9 NIGHTS	OR	Standard Room - 10 NIGHTS	Superior Room - 10 NIGHTS	Suite - FULLY BOOKED - 10 NIGHTS
\$1075 PP Single Share	\$1165 PP Single Share	1300 PP Single Share	OR	\$1205 PP Single Share	\$1305 PP Single Share	\$1455 PP Single Share
\$850 PP Twin Share	\$895 PP Twin Share	962.5 PP Twin Share	OR	\$955 PP Twin Share	\$1005 PP Twin Share	\$1080 PP Twin Share

Financial Fundraising Commitment

\$550.00 per person

August 2027 - Bali Fundraising Journey

Options for Day's Off (at guests own cost)

Cat Cafe - Sanur

Visit to Cafe in Sanur and have a playful time with our cats. Age limit 6 years.

(Entrance fee is 70,000 Rp (\$7.00) /person, includes 1 canned drink, with bintang beer 80,000 Rp/person) (\$8.00).

Please note, this visit is in addition to the Bali Journey cost

Options for Day's Off (at guests own cost)

Visit to Tanah Lot (best to look at doing this on Sanctuary day as we are close)

Entrance fees for Tanah Lot are: • **Adult: IDR 75,000 / Child : IDR 40,000**

Parking is extra: • **Scooter: IDR 3,000** • **Car: IDR 5,000** • **Bus: IDR 10,000**

Worth noting:

- Sunset is the busiest time
- You generally can't enter the inner temple itself unless worshipping
- The grounds, cliff walks and viewpoints are all included in the ticket price
- It's cash-friendly to bring small notes just in case

Please note, this visit is in addition to the Bali Journey cost

August 2027 - Bali Fundraising Journey

Options for Day's Off (at guests own cost)

Visit to Kanto Lampo (waterfall) combine with Butterfly Garden visit

Travel Time - approx 90 mins from Sanur

Opens 8am. Best to arrive as close to 8am as possible as it gets busier as the day goes on. Bring your swimmers, camera, and patience / tolerance (lots of insta people having bikini type pics!!)

Entrance fee 25.000

Entrance fee 50.000 includes 2 photos taken by staff on your phone

Entrance fee 50.000 includes 2 photos taken by staff professional camera

Has cafe where you can buy juices etc

https://www.tripadvisor.nl/Attraction_Review-g15245800-d9705473-Reviews-Kanto_Lampo_Waterfall-Bening_Gianyar_Gianyar_Regency_Bali.html

Kemenuh Butterfly Park - Gianyar

- Open-air tropical gardens with butterflies everywhere
- Cocoon / metamorphosis room
- Nice photo spots and greenery
- Big Atlas moths and giant butterflies
- Small enough to do in about 45 mins–1.5 hrs

Current pricing is roughly:

- Adult international ticket: around IDR 100,000

IMPORTANT INFO

[All Indonesian Arrival Card – Notes - 2026 - Google Docs](#)

Accommodation details to use on the arrival card:

Cozy Haven Sanur - 56 Jalan Bumi Ayu, Sanur 80228

Other 'stuff'

Supermarket info - Closest and Most Convenient

Arta Sedana Sanur (about 3-4 min walk from our accommodation)

Website: artasedana.com

Large local supermarket on Jalan Danau Tamblingan. Good range of everyday groceries, drinks, snacks, toiletries, and some imported items. Very popular and easy to navigate.

Pande Putri Supermarket

Website: pandeputri.com

Local supermarket with good-value basics, food items, cleaning supplies, and drinks. Smaller than Arta Sedana but closer and very handy.

Kitta Sanur

Website: kittasanur.com

Affordable local supermarket option for essentials, snacks, and household items.

Quick Stops and Convenience

Coco Mart Sanur

Website: cocomart.co.id

Good for quick essentials, cold drinks, snacks, and toiletries.

Mini Mart Sanur (various locations)

Includes Indomaret and Alfamart stores throughout Sanur. Ideal for water, snacks, sunscreen, and basics.

August 2027 - Bali Fundraising Journey

Specialty and Nicer Bits

The Pantry Sanur

Website: thepantrybali.com

Small deli-style grocery with nicer breads, cheese, and specialty items.

Bigger Shop / Stocking Up

GrandLucky Sanur

Website: grandlucky.co.id

Full-service supermarket similar in size and range to Bintang Supermarket in Seminyak. Excellent for fresh produce, dairy, imported goods, bakery items, and doing a proper stock-up shop. Prices are generally comparable to Bintang and sometimes better on everyday items.

Sanur – Helpful Tips for First Timers

Getting Around

- Download Grab and Gojek before you arrive. They're the easiest way to get around and are also great for late-night snacks, drinks, pharmacy items and food delivery. (note you will need wifi access for this)
- Short trips are very affordable and reliable in Sanur.
- Blue Bird taxis also operate in the area if needed.

Money and Payments

- Cash is still king for small shops, markets and local cafes.
- ATMs are easy to find along main roads, but withdraw during the day if possible (ask Christie / Chris about a wise card code - its by far the best atm card to have when travelling). You will get the best rate on weekdays (avoid withdrawing money on weekends)
- Many cafes and supermarkets accept cards, but always have small notes handy, especially for tipping where there is no tax added on.

Food and Eating

- Sanur is quieter and more relaxed than Seminyak or Canggu, with lots of good local warungs and casual Western options.
- GrabFood and GoFood are excellent and often cheaper than dining out.
- If you're eating street food, stick to busy stalls and cooked-to-order meals.

Water and Ice

- Do not drink tap water. • Ice is generally safe in established cafes and restaurants.
- Bottled water is cheap and easy to buy everywhere. • DO NOT brush your teeth with tap water, keep a bottle of water in your bathroom at all times.

August 2027 - Bali Fundraising Journey

Walking and Safety

- Sanur is very walkable during the day, especially around cafes and shops.
- Footpaths can be uneven, so closed shoes or good sandals help.
- It's a safe area, but standard travel awareness applies, especially at night.

Beach and Ocean

- Sanur has calm water compared to the west coast, great for early morning walks.
- Swimming is tide-dependent, as water levels change throughout the day.
- Sunrise walks along the beachfront path are a highlight.

Power and Charging

- Power points are not the same style as Australia in many places, but not all.
- Bring a universal adaptor just in case.
- Power outages are rare but can happen briefly.

- Note - one power bank in your carry on is accepted per person, they are very handy!

Laundry (our accom provides the service, approx \$2.50 per kg for next day service)

- Laundry services are cheap, fast and everywhere.
- Same-day or next-day turnaround is common.
- Great option for longer stays.

Health and Comfort

- Pharmacies are plentiful and well stocked.
- Sunscreen and mozzie repellent are essentials (sunscreen is expensive, bring from home!)
- Expect humidity – lightweight clothing and breathable fabrics make life easier.

Local Etiquette

- Dress modestly when away from the beach.
- A smile and polite tone go a long way.
- Bali runs at a slower pace – patience is part of the experience.

Toilets and Plumbing – What to Know

• In Bali, most toilets cannot handle toilet paper.

- Even in hotels and guesthouses, it's common to place used toilet paper in the bin provided next to the toilet.
- This helps avoid blockages and plumbing issues.

Bidet Hoses

- Many bathrooms have a hand-held bidet hose next to the toilet.
- This is normal and widely used for rinsing.
- You can still use toilet paper if you prefer, just place it in the bin unless clearly advised otherwise.

August 2027 - Bali Fundraising Journey

Public Toilets

- Public toilets may be more basic.
- Carry tissues or toilet paper with you, just in case (and a little plastic bag for paper in case)
- Some public toilets charge a small fee and provide paper.

Hygiene Tips

- Hand sanitiser is handy to carry.
- Always wash hands where possible, especially before eating (and after touching money)

Bringing Extra Luggage to Bali – Important Trip Goal

A key part of the purpose of this trip is getting donated supplies from Australia to Bali, where they have a much bigger impact.

Thanks to the Hairy Hounds community, we currently have around 25 suitcases already filled with donated items including toys, treats, and veterinary supplies.

Many of these items are:

- expired or no longer saleable in Australia
- donated by clinics, pet shops, or individuals
- inexpensive here, but far more valuable in Bali

As an example, a toy that costs \$4 here can often be sold for \$10 in Bali. That money stays with the local vet clinics and rescue partners and helps directly offset vet bills and ongoing care costs for dogs at ACT Dog Rescue and partner clinics.

Extra Luggage Request

We're asking each guest to purchase extra checked luggage for the flight where possible.

- We will supply the suitcase
- We will supply all goods
- You are not expected to source or pack items yourself
- If you're uncomfortable transporting medical items, that's completely fine – I'll handle those personally

This is one of the simplest but most powerful ways each person can help.

Optional: Help Source Donated Items (No Purchasing Required)

If guests are happy to ask around via:

- Facebook
- friends and family
- local businesses or workplaces

We're not asking anyone to buy anything, in fact the more we can save from landfill, the better!. Many people have unused items or offcuts they're very happy to donate once they know it's for animal welfare.

Items we can use

Fabric for toy making

- Cotton
- Flannel
- Fabric offcuts of any size

These are used by the pet shop to make dog toys that are sold locally, with funds going back into rescue care.

Rope

- Any strong rope suitable for dog toys
- If you or someone you know has access to Bunnings or a supply store and can donate rope, that's incredibly helpful

Grooming Products

- Unwanted scissors, nail clippers, blades (#7, #10, #30 blades are needed the most)
- Unwanted / donated Clippers
- Grooming jacket / uniform
- Malaseb, aloveen and any specialised shampoos

August 2027 - Bali Fundraising Journey

Pet medications

- **Unused or expired flea treatments**
- **Worming treatments**
- **Caltrate, vitamin D, B, C and calcium and magnesium (not chewable or gummies)**
- **Other veterinary medications**

*** Guests do not need to transport medications if they're not comfortable — Mate's Gift sort and carry these ***

Milk replacement formulas

- **Wombaroo or Divetalact**

These are often expired at pet shops but are still extremely valuable for puppies and kittens in care.

Final Notes

- Participation beyond the extra luggage is completely optional
No pressure to source items
- Even one extra suitcase makes a genuine difference

The logistics side of the trip is unglamorous but hugely impactful, and it's one of the reasons we're able to stretch donations so much further on the ground.

Booking Flights

It'd be great to get the majority of travellers on the same flight for the ease of coordination, but understand that you might wish to travel earlier or stay longer or you may sleep better on late flights etc etc

August 2027 - Bali Fundraising Journey

Here are some helpful websites for search flights.

Great Flight Search Websites

Google Flights — <https://www.google.com/travel/flights>

A powerful search engine with flexible date views, price graphs, and fare tracking so you can easily see the cheapest days to fly. [Google](#)

Momondo — <https://www.momondo.com.au>

Compares billions of flight prices from multiple airlines and booking sites, often uncovering options others miss. [momondo](#)

KAYAK — <https://www.kayak.com.au/flights>

Large metasearch engine that scans hundreds of airlines and travel agents to help find low-cost options. [KAYAK](#)

Kiwi.com — <https://www.kiwi.com>

Useful for finding cheaper combinations of flights (sometimes with longer layovers), including routes traditional sites don't always show. [Kiwi](#)

FlightsFinder.com — <https://www.flightsfinder.com>

A “meta-meta” search that lets you compare results from multiple top search engines like Google Flights, KAYAK, Kiwi, and more in one place. [FlightsFinder](#)

Wayaway — <https://www.wayaway.com>

A flight search engine that includes cashback offers and clear pricing (including taxes/fees), plus city guides to help plan your trip. [Roaming Sonaa](#)

Netflights — <https://www.netflights.com>

Established flight search and booking site that compares airfares from many carriers and agencies to find cheaper deals. www.netflights.com

August 2027 - Bali Fundraising Journey

Financial commitment for the tour is outlined below.

The tour fee includes:

- 9 OR 10 nights accommodation from check-in Sunday 1st August 2027 to check-out Tuesday 10th August (or 11th August for 10 nights)
- All ground transport (as long as you are travelling to and from the airport with 2 other guests), other wise an additional \$25 is added each way • 2 Mate's gift t-shirts (please provide sizing)
- Meals and one drink with each meal (besides alcohol)
- Scheduled activities (wildlife sanctuary)

Costings Full Journey Fee (minus fundraising)

Standard Room - 9 NIGHTS	Superior Room - 9 NIGHTS	Suite - FULLY BOOKED - 9 NIGHTS	OR	Standard Room - 10 NIGHTS	Superior Room - 10 NIGHTS	Suite - FULLY BOOKED - 10 NIGHTS
\$1075 PP Single Share	\$1165 PP Single Share	\$1300 PP Single Share	OR	\$1205 PP Single Share	\$1305 PP Single Share	\$1455 PP Single Share
\$850 PP Twin Share	\$895 PP Twin Share	962.5 PP Twin Share	OR	\$955 PP Twin Share	\$1005 PP Twin Share	\$1080 PP Twin Share

Accommodation

- includes a private room with private bathroom, kitchenette, small patio, shared pool within the villa complex, refrigerator, free wifi, airconditioning, flat screen tv, and is within walking distance to shops and restaurants.

Additional Luggage for Donations

- 20kg additional checked luggage per person, purchased by participants as part of the financial commitment

This additional luggage is intentionally used to help transport donated supplies and equipment over to support rescue work on the ground. What is packed is coordinated to ensure luggage space is used purposefully and effectively.

Fundraising Component

- \$550 fundraising commitment per person

This fundraising directly supports on-the-ground work, including fruit for the wildlife sanctuary, a sterilisation clinic, an adoption day, and veterinary treatments and donations.

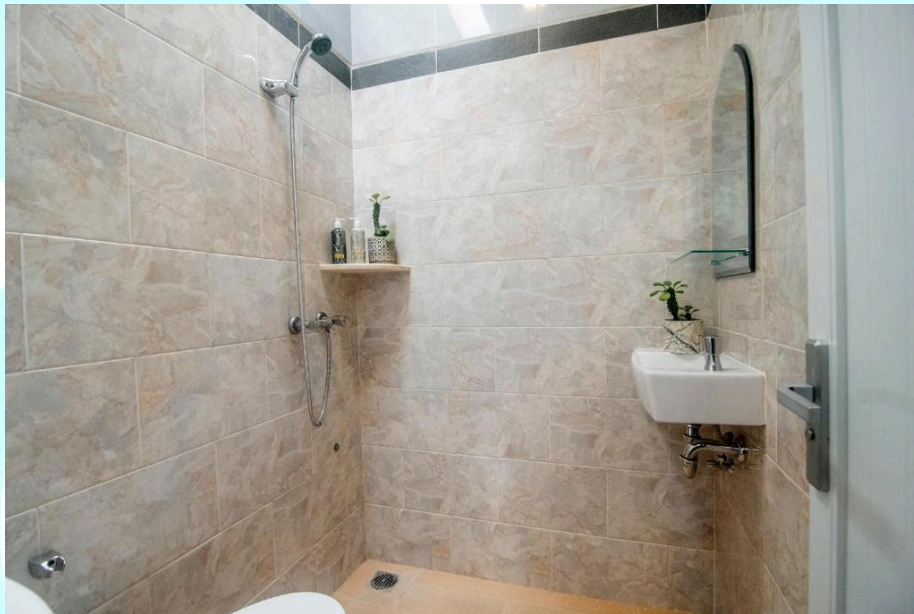
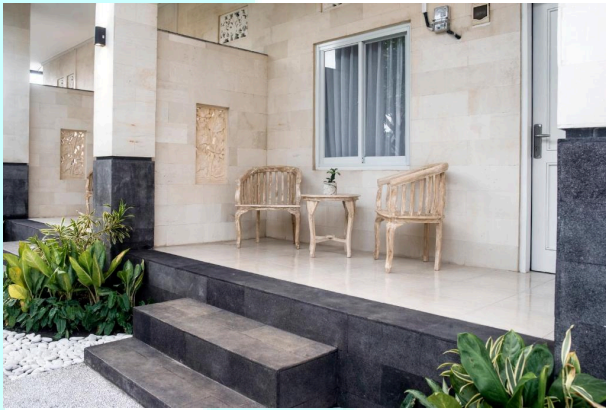
Exclusions

International flights / Alcohol

Travel Insurance (please note, all guests must have travel insurance)

August 2027 - Bali Fundraising Journey

Accommodation - Sanur



Payments

August 2027 - Bali Fundraising Journey

Deposit: \$300.00

Due: Friday 14th May 2027

Balance of journey: Remaining balance

Due: Friday 16th July 2027

Fundraising contribution: \$550

Due: Friday 16th July 2027

Cancellations

**Cancellations made after 17th July 2027 will incur a fee of \$450.00
Any remaining funds paid will be refunded.**

Payment Plans

Payment plans are welcome. Please feel free to set up a plan that suits your financial situation.

Payment Details

Account Name: C L Reeves

BSB: 633 000

Account Number: 186 007 241

**Please email your payment receipt to matesgiftfundraising@gmail.com.
A confirmation will be sent once payment is received.**

Important Note

August 2027 - Bali Fundraising Journey

Mate's Gift does not operate as a commercial tour company. This journey is a shared-cost, charity-led fundraising experience organised to support animal welfare and community programs. Costs reflect shared expenses only.

The journey is coordinated by Christie on behalf of Mate's Gift. Activities, visits, and community interactions take place in collaboration with local organisations, caretakers, and community members. Mate's Gift does not receive profit from travel arrangements.

Participation requires flexibility and understanding that conditions, schedules, and activities may change due to local circumstances, animal welfare needs, or weather. By taking part, participants acknowledge that this is a fundraising journey focused on support, learning, and contribution rather than a traditional holiday experience.

